

REVISIONS					
REV	ZONE	DESCRIPTION	BY	DATE	APPD

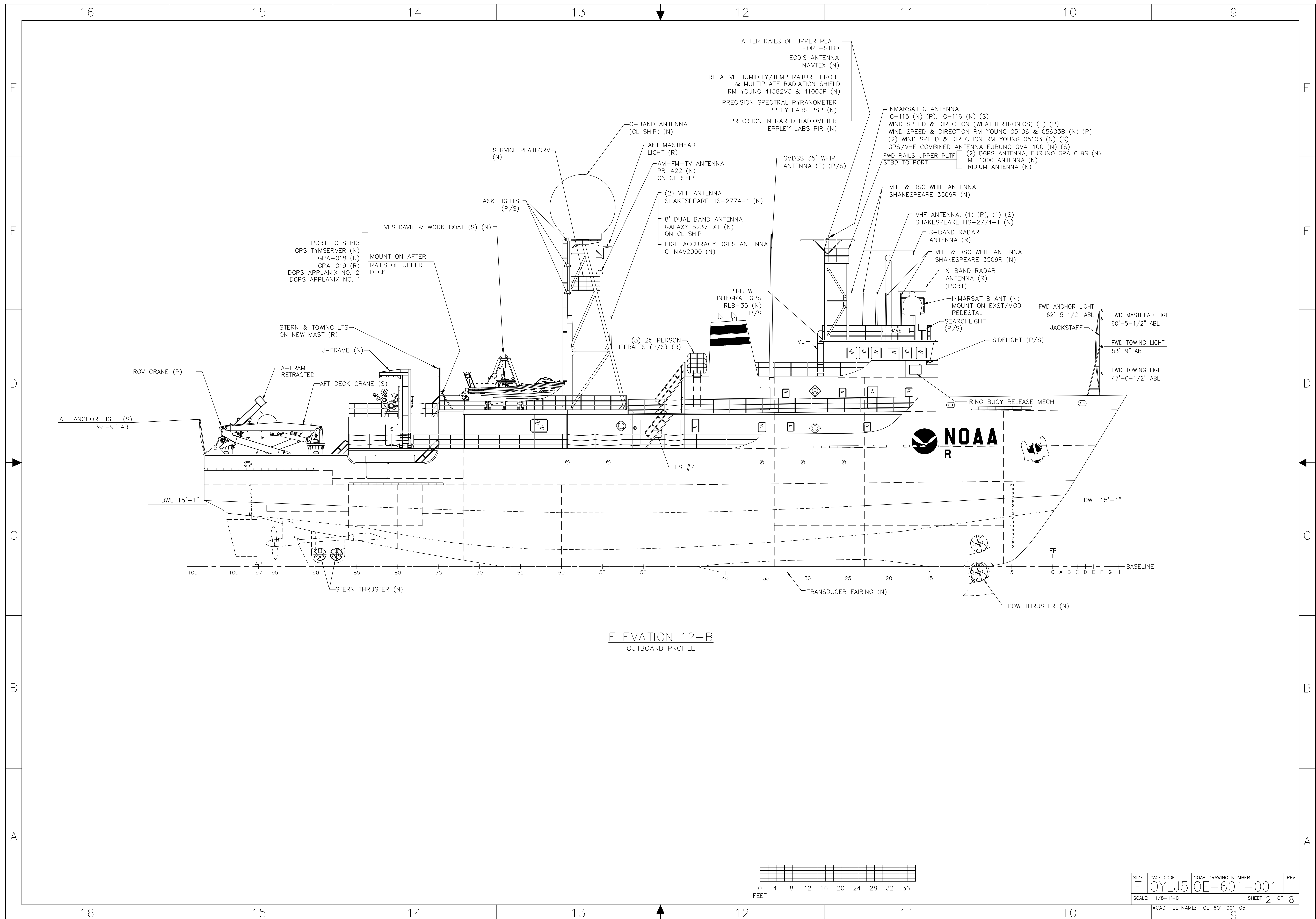
GENERAL NOTES

1. THE PURPOSE OF THIS DRAWING IS TO SHOW THE MODIFIED GENERAL ARRANGEMENT OF THE SHIP "EX-CAPABLE" AS CONVERTED TO A NOAA RESEARCH SHIP "OKEANOS EXPLORER".
2. ALL WORK (TO INCLUDE MATERIALS, WORKMANSHIP, AND ENGINEERING DESIGNS) SHALL BE IN ACCORDANCE WITH THE SPECIFICATIONS AND SHALL MEET APPLICABLE "AMERICA BUREAU OF SHIPPING" (ABS), CFR 46, AND SOLAS REQUIREMENTS.
3. ABBREVIATIONS ARE IN ACCORDANCE WITH ASME Y14.38-1999.
4. ALL FEATURES ARE EXISTING UNLESS NOTED: (N) NEW, (M) MODIFIED, (R) RELOCATED.
5. WHERE EQUIPMENT MANUFACTURER/MODEL IS IDENTIFIED SUBSTITUTIONS MUST BE APPROVED BY NOAA AS HAVING EQUAL SALIENT FEATURES AND QUALITY OF CONSTRUCTION. IN ADDITION, THE PROPOSED SUBSTITUTE MUST BE SHOWN TO BE SUITABLE FOR INTEGRATION INTO THE SYSTEM WITHOUT HAVING A NEGATIVE IMPACT ON THE OVERALL ARRANGEMENT, PERFORMANCE, MAINTENANCE OR ACCESS TO THE SPACE.
6. CLEAR HEAD ROOM IN NORMALLY OCCUPIED SPACES SHALL BE AS HIGH AS POSSIBLE, BUT NOT LESS THAN 6 FEET 9 INCHES.

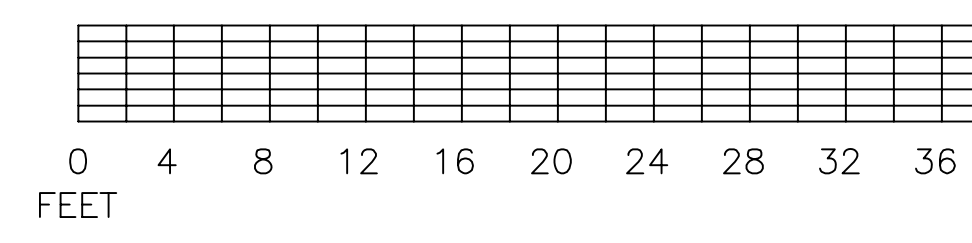
NO	TITLE	DRAWING NO.			
REFERENCES					
NATIONAL OCEANIC AND ATMOSPHERIC ADMINISTRATION OFFICE OF NOAA CORPS OPERATIONS					
PROJECT ENGR	DATE	NOAA SHIP OKEANOS EXPLORER GENERAL ARRANGEMENT PLANS & PROFILES- CONVERTED VESSEL			
ASST PROG MGR	DATE				
PROGRAM MGR	DATE				
DESIGNED INN & SMC	11/05	SIZE	CAGE CODE	NOAA DRAWING NUMBER	REV
CHECKED P. CHIAVETTA	11/05	F	OYLJ5	OE-601-001	-
REVIEWED		APPROVED FOR NOAA		CAD FILENAME: OE-601-001-05.DWG	SHEET 1 OF 8
APPROVED		SCALE: AS NOTED			

AMSEC LLC
M. ROSENBLATT & SON GROUP
NAVAL ARCHITECTS & MARINE ENGINEERS
BREMERTON, OAKLAND, SAN DIEGO

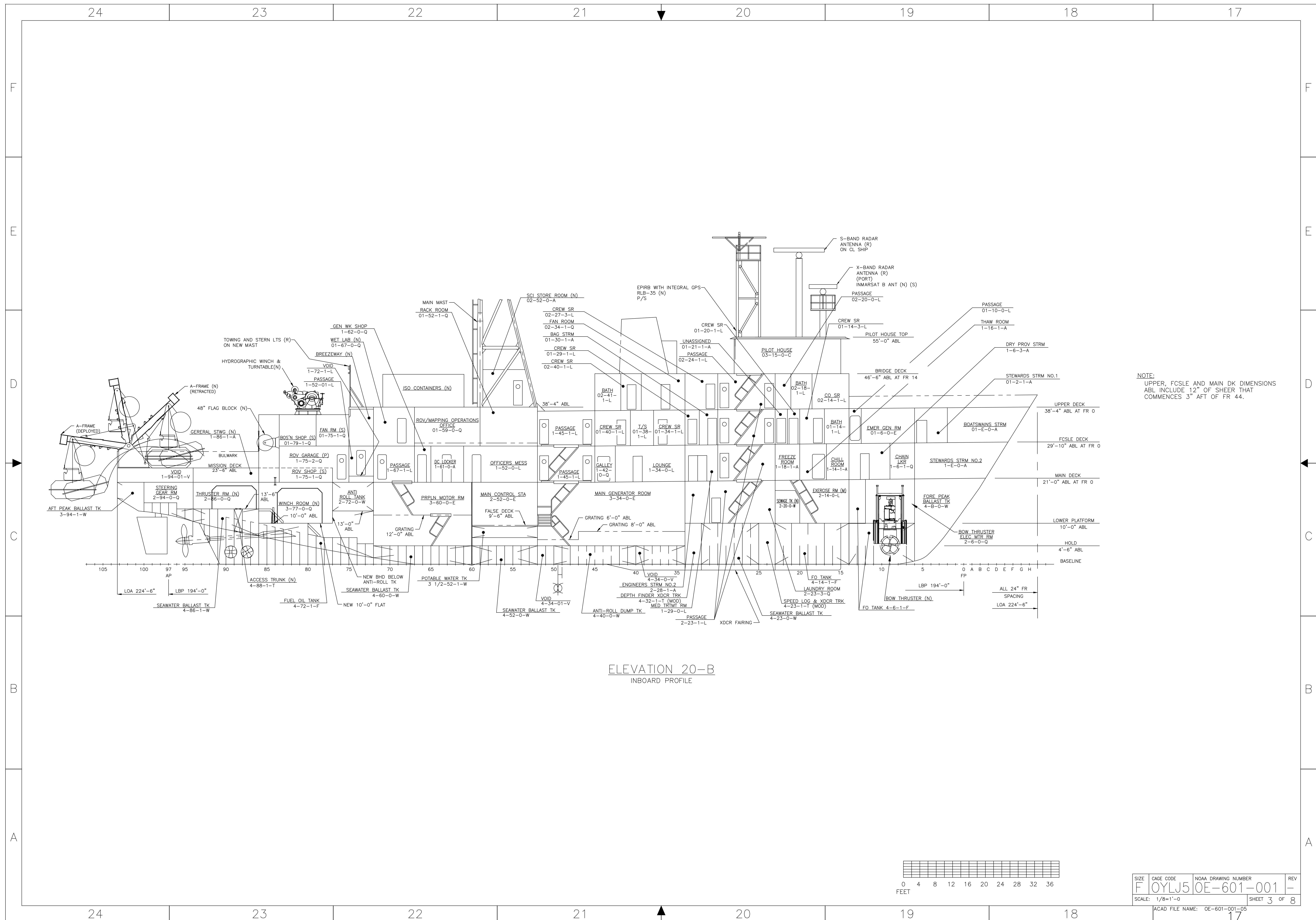
NOAA SHIP OKEANOS EXPLORER
GENERAL ARRANGEMENT
PLANS & PROFILES-
CONVERTED VESSEL



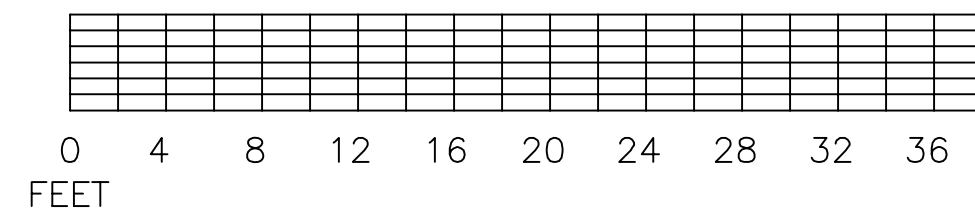
ELEVATION 12-B
OUTBOARD PROFILE



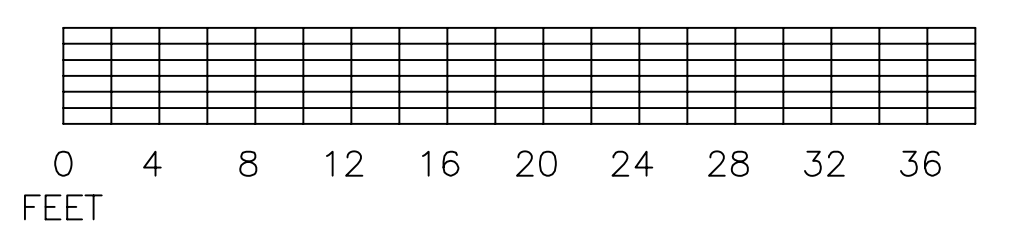
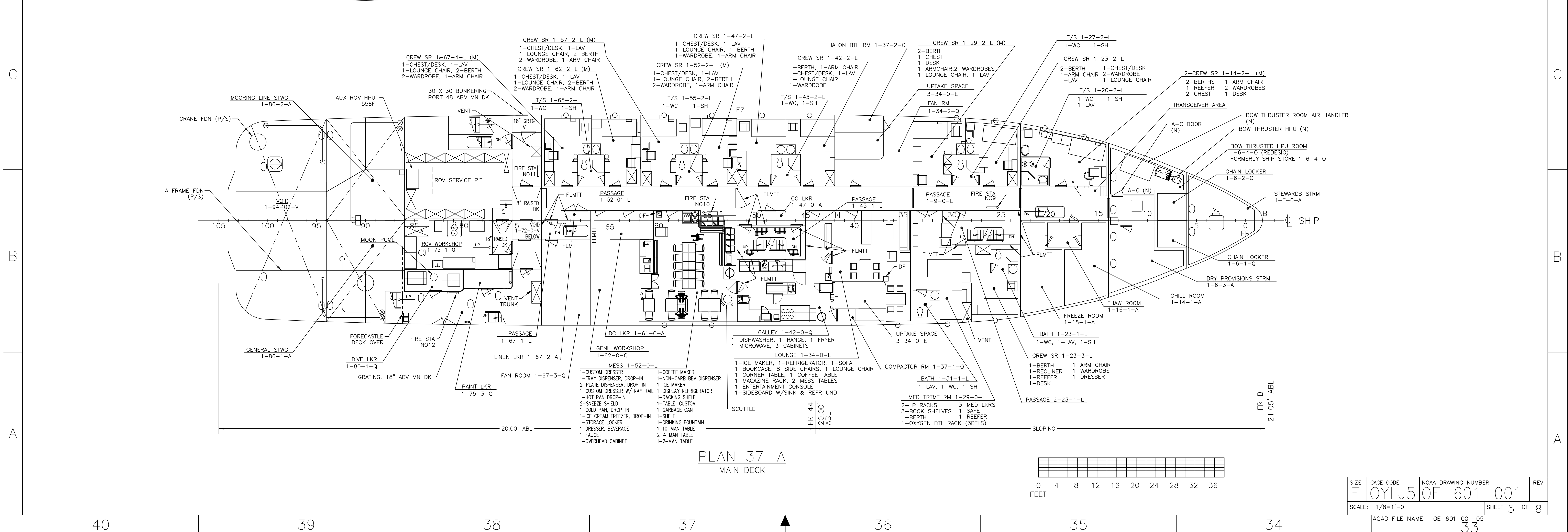
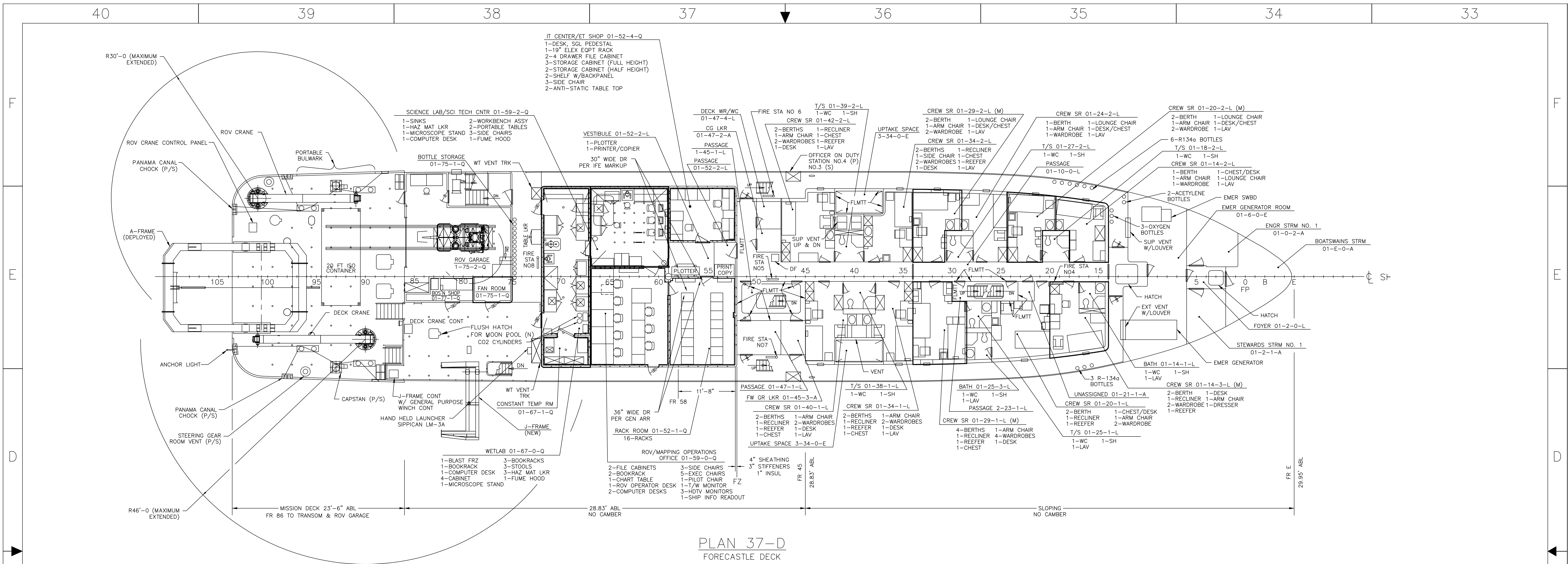
SIZE	CAGE CODE	NOAA DRAWING NUMBER	REV
F	OYLJ5	OE-601-001	-
SCALE: 1/8"=1'-0"			SHEET 2 OF 8
ACAD FILE NAME: OE-601-001-05			9



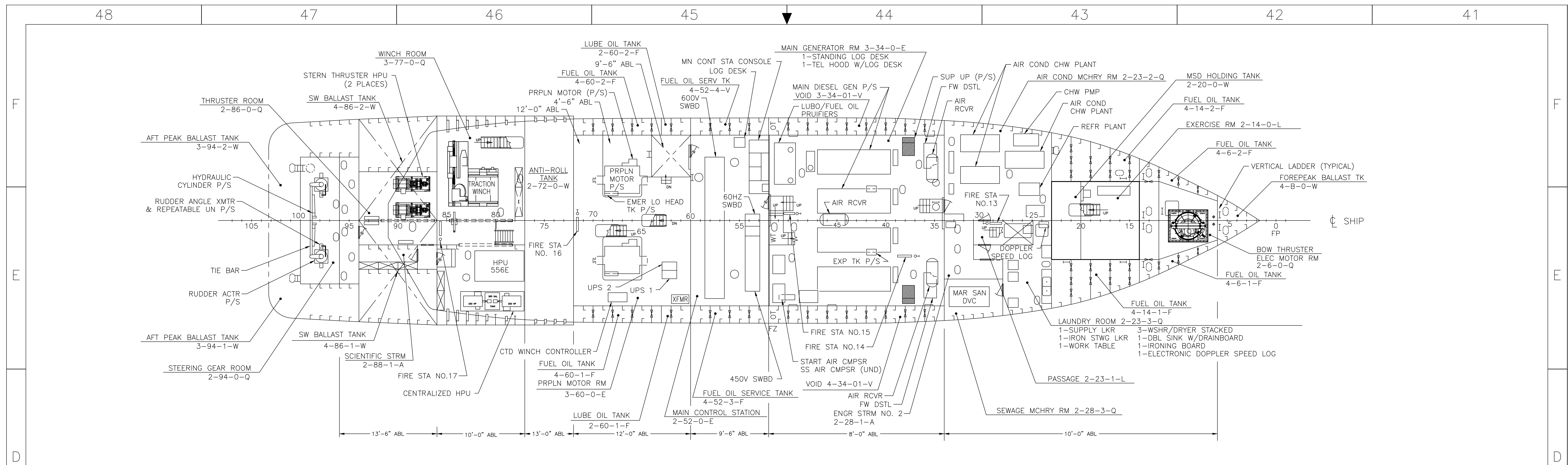
NOTE:
UPPER, FCSLE AND MAIN DK DIMENSIONS
ABL INCLUDE 12" OF SHEER THAT
COMMENCES 3" AFT OF FR 44.



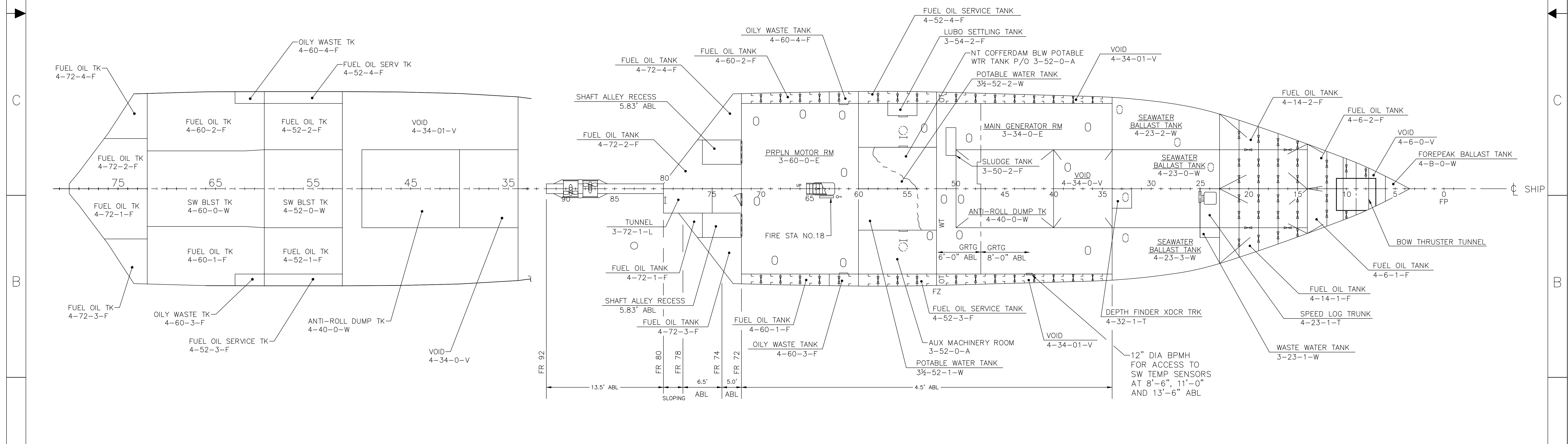
SIZE	CAGE CODE	NOAA DRAWING NUMBER	REV
F	OYLJ5	OE-601-001	-
SCALE: 1/8"=1'-0"			SHEET 3 OF 8
ACAD FILE NAME: OE-601-001-05			17



SIZE	CAGE CODE	NOAA DRAWING NUMBER	REV
F	OYLJ5	OE-601-001	-
SCALE: 1/8"=1'-0"			SHEET 5 OF 8
ACAD FILE NAME: OE-601-001-05			33

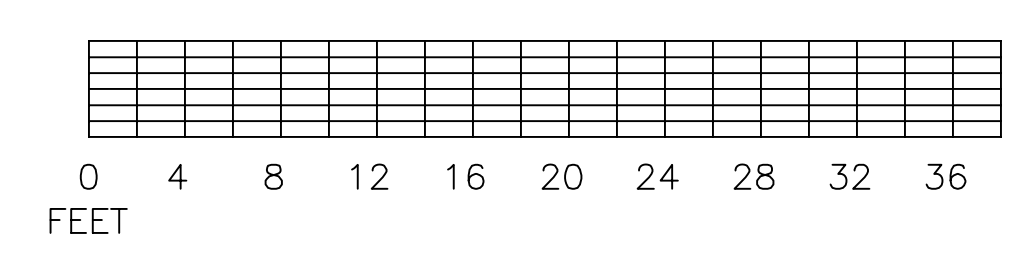


PLAN 45-D
LOWER DECK



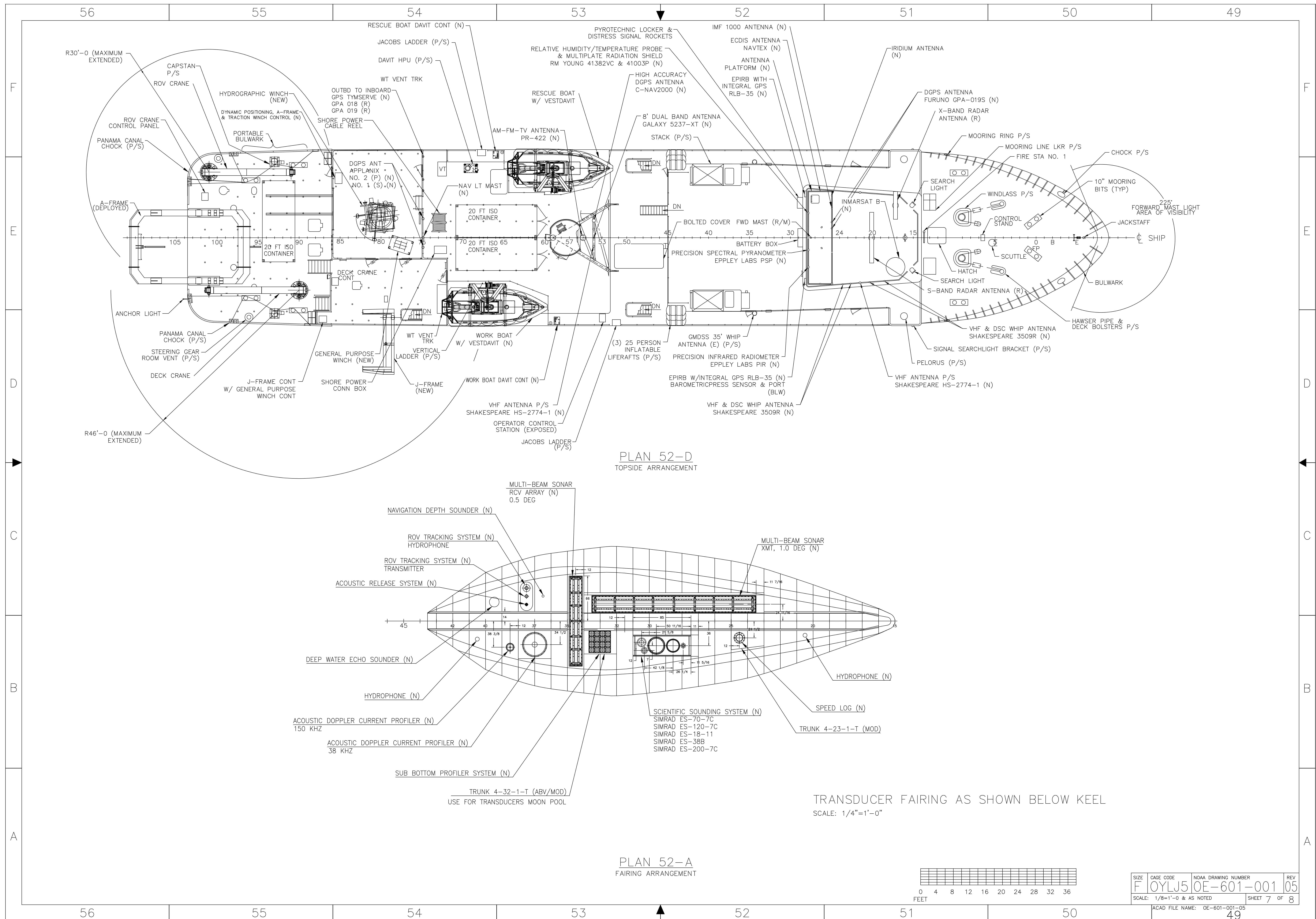
PLAN 47-A
INNERBOTTOM

PLAN 44-A
HOLD



SIZE	CAGE CODE	NOAA DRAWING NUMBER	REV
F	OYLJ5	OE-601-001	-
SCALE: 1/8"=1'-0"			SHEET 6 OF 8

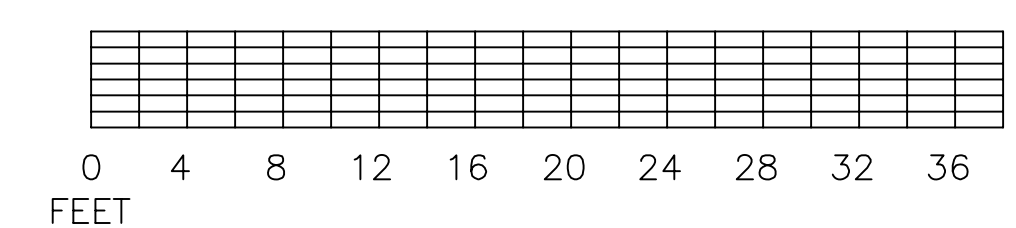
ACAD FILE NAME: OE-601-001-05
41



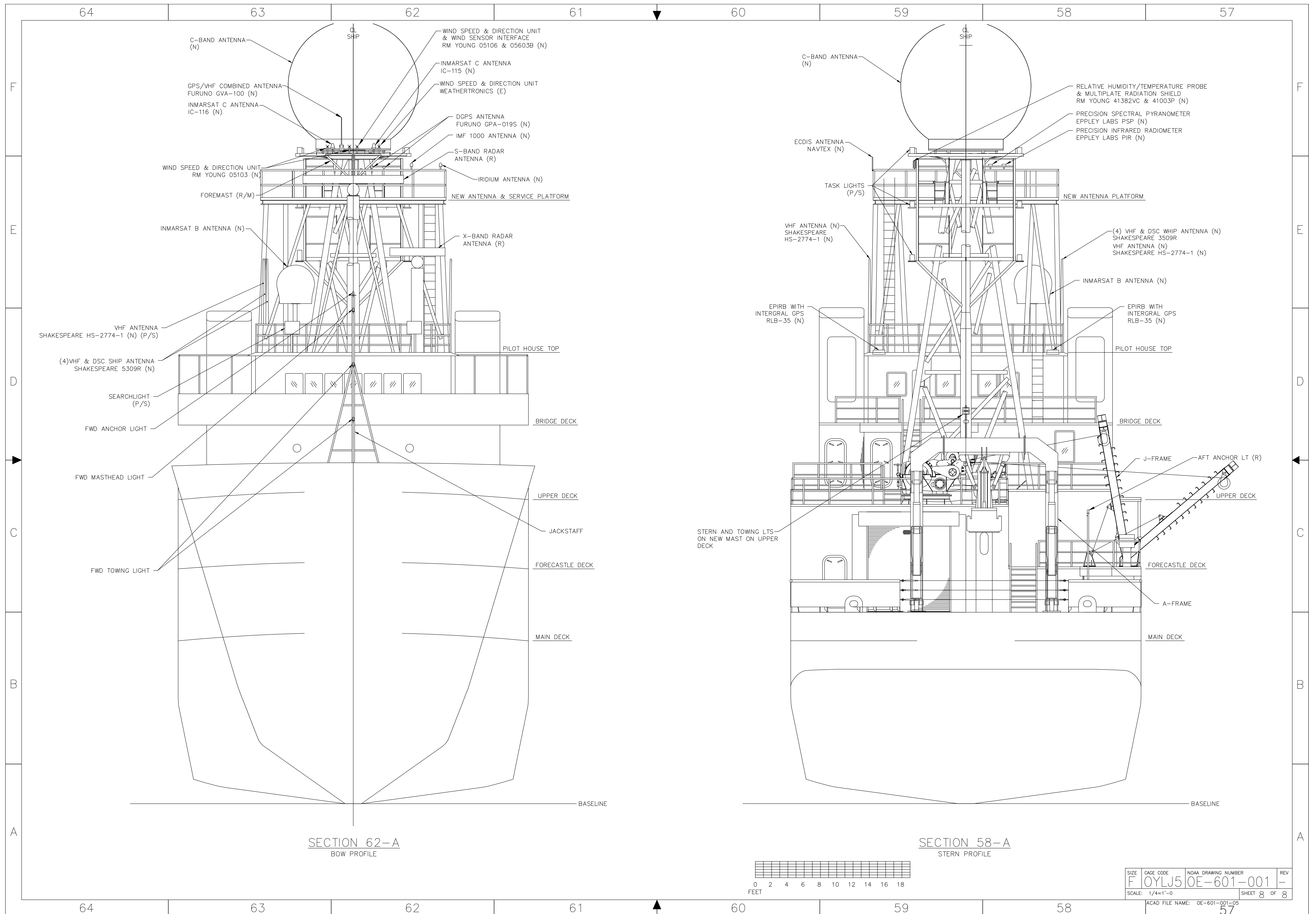
PLAN 52-D
TOPSIDE ARRANGEMENT

PLAN 52-A
FAIRING ARRANGEMENT

TRANSDUCER FAIRING AS SHOWN BELOW KEEL
SCALE: 1/4"=1'-0"



SIZE	CAGE CODE	NOAA DRAWING NUMBER	REV
F	OYLJ5	OE-601-001	05
SCALE: 1/8"=1'-0" & AS NOTED			SHEET 7 OF 8
ACAD FILE NAME: OE-601-001-05			49



SHIP

C-BAND ANTENNA (N)

GPS/VHF COMBINED ANTENNA FURUNO GVA-100 (N)

INMARSAT C ANTENNA IC-116 (N)

WIND SPEED & DIRECTION UNIT RM YOUNG 05103 (N)

FOREMAST (R/M)

INMARSAT B ANTENNA (N)

VHF ANTENNA SHAKESPEARE HS-2774-1 (N) (P/S)

(4)VHF & DSC SHIP ANTENNA SHAKESPEARE 5309R (N)

SEARCHLIGHT (P/S)

FWD ANCHOR LIGHT

FWD MASTHEAD LIGHT

FWD TOWING LIGHT

WIND SPEED & DIRECTION UNIT & WIND SENSOR INTERFACE RM YOUNG 05106 & 05603B (N)

INMARSAT C ANTENNA IC-115 (N)

WIND SPEED & DIRECTION UNIT WEATHERTRONICS (E)

DGPS ANTENNA FURUNO GPA-019S (N)

IMF 1000 ANTENNA (N)

S-BAND RADAR ANTENNA (R)

IRIDIUM ANTENNA (N)

NEW ANTENNA & SERVICE PLATFORM

X-BAND RADAR ANTENNA (R)

PILOT HOUSE TOP

BRIDGE DECK

UPPER DECK

JACKSTAFF

FORECASTLE DECK

MAIN DECK

BASELINE

SHIP

C-BAND ANTENNA (N)

ECCDIS ANTENNA NAVTEX (N)

TASK LIGHTS (P/S)

VHF ANTENNA (N) SHAKESPEARE HS-2774-1 (N)

EPIRB WITH INTEGRAL GPS RLB-35 (N)

STERN AND TOWING LTS ON NEW MAST ON UPPER DECK

RELATIVE HUMIDITY/TEMPERATURE PROBE & MULTIPLATE RADIATION SHIELD RM YOUNG 41382VC & 41003P (N)

PRECISION SPECTRAL PYRANOMETER EPPLEY LABS PSP (N)

PRECISION INFRARED RADIOMETER EPPLEY LABS PIR (N)

NEW ANTENNA PLATFORM

(4) VHF & DSC WHIP ANTENNA (N) SHAKESPEARE 3509R

VHF ANTENNA (N) SHAKESPEARE HS-2774-1 (N)

INMARSAT B ANTENNA (N)

EPIRB WITH INTEGRAL GPS RLB-35 (N)

PILOT HOUSE TOP

BRIDGE DECK

J-FRAME

AFT ANCHOR LT (R)

UPPER DECK

FORECASTLE DECK

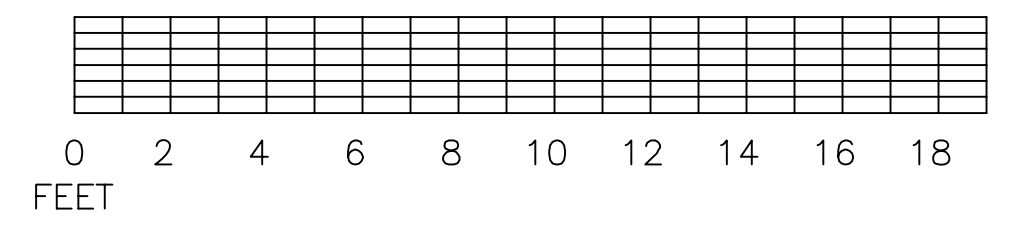
A-FRAME

MAIN DECK

BASELINE

SECTION 62-A
BOW PROFILE

SECTION 58-A
STERN PROFILE



SIZE	CAGE CODE	NOAA DRAWING NUMBER	REV
F	OYLJ5	OE-601-001	-
SCALE: 1/4"=1'-0"			SHEET 8 OF 8
ACAD FILE NAME: OE-601-001-05			57